

DOT Downlights  
**INSTALLATION INSTRUCTIONS**



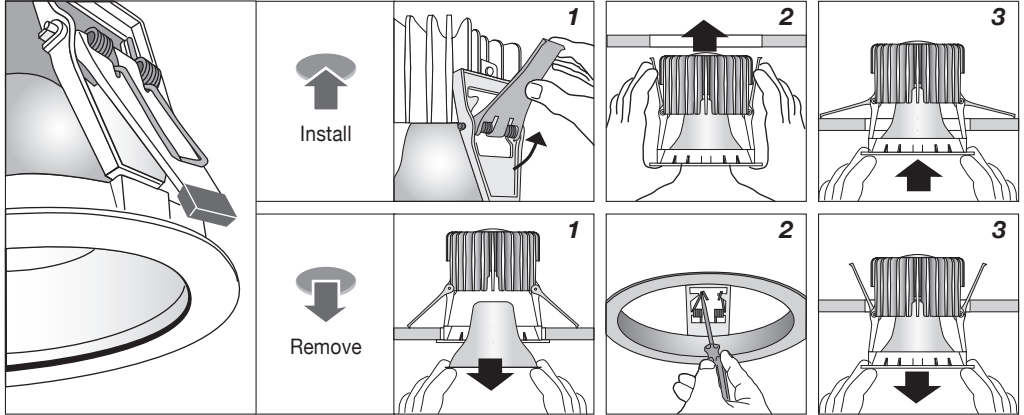
**LED Series Downlights**

IP 20 CE

DOT **LED**

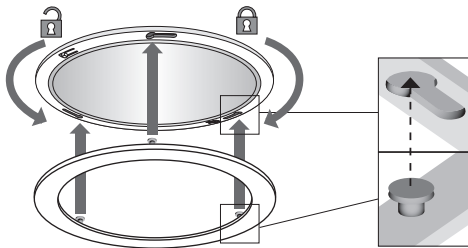


**DESIGNED & CONSTRUCTED IN NEW ZEALAND**

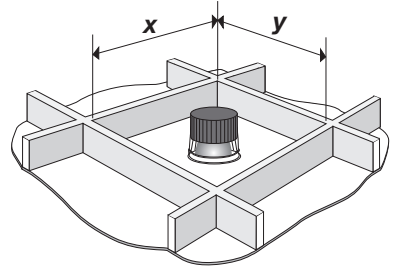


**AXLOCK**  
 SYSTEM

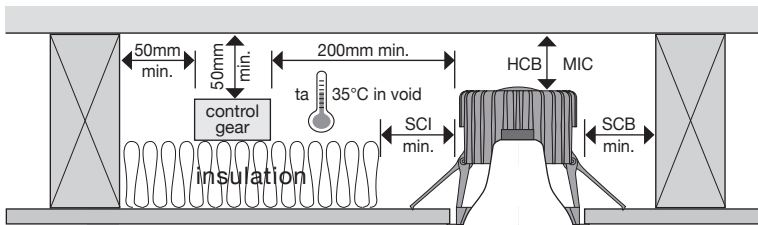
**Accessories**



$x \times y = 0.25 \text{ M}^2 \text{ min.}$



**Building Element Clearances**

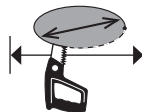


Luminaire not suitable for covering with thermally insulated material.



Note: Remote Control Gear must not be covered by insulation.

For Specific Driver Details Refer:  
 TRIDONIC = [www.tridonic.com](http://www.tridonic.com)  
 TCI = [www.tcisaronno.com](http://www.tcisaronno.com)



For HCB, SCB and SCI dimensions – refer overleaf.

- HCB = Minimum Height Clearance Building Element
- SCB = Minimum Side Clearance Building Element
- SCI = Minimum Side Clearance Insulation
- MIC = Minimum Insulation Clearance

# DOT LED Series INSTALLATION INSTRUCTIONS



DESIGNED &  
CONSTRUCTED  
IN NEW ZEALAND



ROHS Compliant  
Supply Voltage: 220/240V 50Hz AC

	Wattage				AS/NZS 60598.2.2 :2016	Classification
--	---------	--	--	--	------------------------------	----------------

DOT **9100 Series** | Recessed | Surface Mounted | Suspended  
**X** – Excel | **P** – Performance | **B** – Base Series

<b>9124/8</b>	10.0	92	0.4	0.10	IP 20	CA90
<b>9134/8</b>	14.0	92	0.4	0.10	IP 20	CA90
<b>9154/8</b>	21.0	92	0.4	0.10	IP 20	CA90

DOT **9400 Series** | Recessed | Surface Mounted  
**X** – Excel | **P** – Performance | **B** – Base Series

<b>9428</b>	10.0	102x102	0.7	0.10	IP 20	CA90
<b>9438</b>	14.0	102x102	0.7	0.10	IP 20	CA90
<b>9458</b>	21.0	102x102	0.7	0.10	IP 20	CA90

DOT **9700 Series** | Recessed | Surface Mounted | Suspended  
**X** – Excel | **P** – Performance | **C** – Colour | **B** – Base Series

<b>9724/8</b>	10.3	140	1.0	0.19	IP6X	CA90
<b>9734/8</b>	13.8	140	1.0	0.19	IP6X	CA90
<b>9754/8</b>	19.4	140	1.0	0.19	IP6X	CA90
<b>9774/8</b>	26.9	140	1.0	0.19	IP6X	CA90
<b>9794/8</b>	34.6	140	1.0	0.19	IP6X	CA90
<b>97104/8</b>	40.5	140	1.0	0.19	IP6X	CA90
<b>97144/8 *</b>	56.0	140	1.0	0.19	IP20	Do not cover

DOT **9800 Series** | Recessed | Surface Mounted  
**P** – Performance | **C** – Colour

<b>9828</b>	10.3	146x146	1.0	0.19	IP6X	CA90
<b>9838</b>	13.7	146x146	1.0	0.19	IP6X	CA90
<b>9858</b>	19.3	146x146	1.0	0.19	IP6X	CA90
<b>9878</b>	26.9	146x146	1.0	0.19	IP6X	CA90
<b>9898</b>	34.6	146x146	1.0	0.19	IP6X	CA90
<b>98108</b>	40.5	146x146	1.0	0.19	IP6X	CA90
<b>98148 *</b>	56.0	146x146	1.0	0.19	IP 20	Do not cover

DOT **9900 Series** | Recessed | Surface Mounted | Suspended  
**X** – Excel | **P** – Performance | **C** – Colour | **B** – Base Series

<b>9934/8</b>	13.5	175	1.4	0.28	IP6X	CA90
<b>9954/8</b>	19.0	175	1.4	0.28	IP6X	CA90
<b>9974/8</b>	27.1	175	1.4	0.28	IP6X	CA90
<b>9994/8</b>	33.6	175	1.4	0.28	IP6X	CA90
<b>99104/8</b>	38.9	175	1.4	0.28	IP6X	CA90
<b>99144/8 *</b>	53.5	175	1.4	0.28	IP20	Do not cover
<b>99174/8 *</b>	68.1	175	1.4	0.28	IP20	Do not cover

DOT **9100T** | Trim Less Series

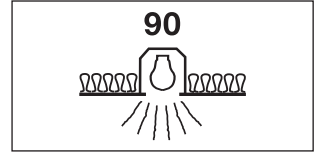
<b>9128 TXC</b>	10.0	155x155	1.3	0.10	IP 20	CA90
<b>9128 TXS</b>	10.0	135x135	1.3	0.10	IP 20	CA90
<b>9138 TXC</b>	14.0	155x155	1.3	0.10	IP 20	CA90
<b>9138 TXS</b>	14.0	135x135	1.3	0.10	IP 20	CA90
<b>9158 TXC</b>	21.0	155x155	1.4	0.10	IP 20	CA90
<b>9158 TXS</b>	21.0	135x135	1.4	0.10	IP 20	CA90

DOT **9900W** | Wallwasher Series

<b>9938W</b>	13.8	175	1.24	0.28	IP20	CA90
<b>9958W</b>	19.3	175	1.24	0.28	IP20	CA90
<b>9978W</b>	27.2	175	1.24	0.28	IP20	CA90
<b>99108W</b>	41.0	175	1.24	0.28	IP20	CA90

CLASSIFICATIONS  
FOR INDOOR USE ONLY

## CA90 LUMINAIRES



Risk of fire – Building insulation must not cover this luminaire.

Building insulation may abut the luminaire.

Required clearance from structural members and building elements.

HC B = 50mm SC B = 50mm

MIC = 50mm SCI = 0mm (Abutted)

## DO NOT COVER LUMINAIRES



Risk of fire – Building insulation must not cover this luminaire.

Required clearance from structural members and building elements.

HC B = 50mm SC B = 50mm

SCI = 50mm

WARNING (New Zealand Only)

This luminaire is not suitable for installation in locations where the thermal insulation is present, or may reasonably be expected to be installed in the future, or where there is a likelihood of other combustible material, e.g. leaves or vermin debris, etc. collecting on or around the luminaire. It is not suitable for domestic installations or installation in residential areas of non-domestic installations (Residential institutions, Hotels, boarding houses, hospitals, accommodation houses, motels, hostels and the like.

\* DOT Downlight models classified as **Do Not Cover** are:  
97144/8, 98144/8, 99144/8, 99174/8